



Annex Exhibition at Koshato Bldg.



The precious materials such as local folk tools are exhibited here. Please contact staff at Local Heritage Exhibition Hall if you would like to visit this exhibition.



Information

- * Admission to both exhibitions is free.
- * The movies of the tangible and intangible local heritage and nature are on the screen at the neighboring theater when the venue is not in use. This 2D barcode will redirect you to the digital archives website called "Akishima: The Story of Pure Water and Memory", which offers various digitalized materials online, including the movies mentioned above. (This website is available in Japanese only.)
- * Please consult with us if you would like to pay a group visit. This service is also available on the days we are closed.



Reminders

Thank you for your cooperation to protect the precious materials.



Do not make calls



Do not use flash



Do not bring in umbrellas



Do not eat or drink



Guide dogs welcome



Opening Hours

- * **Local Heritage Exhibition Hall**
Tue - Fri: 10 a.m - 8 p.m.
Sat, Sun & Holidays: 10 a.m. - 6 p.m.
- * **Annex Exhibition**
10 a.m. - 5 p.m.

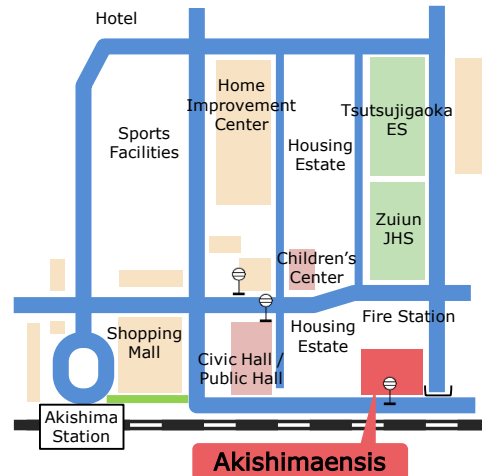


Days Closed

Monday (or the following weekday if Monday is a national holiday), Year-end and New Year's Holidays, and Special Inventory Period



Directions



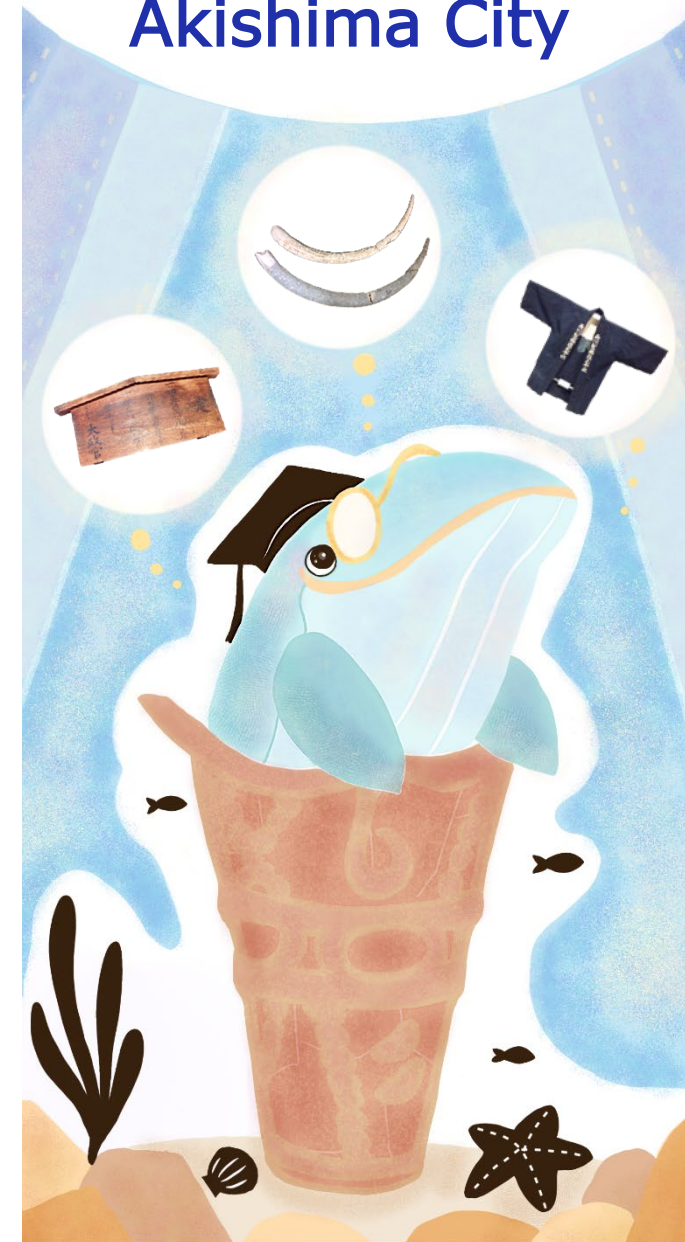
- * **JR Ome Line**
10-minute walk from Akishima Station
- * **Tachikawa Bus**
(Akishima-Bound Bus Line #22, 23, 23-2, 24, 26)
5-minute walk from Akishima Civic Hall Bus Stop
- * **A Bus (North Route)**
Right next to Akishimaensis Bus Stop



Inquiry

- * **Local Heritage Exhibition Hall & Annex Exhibition**
Service Desk: International Exchange and Culture Bldg. of Akishimaensis
3-3-15 Tsutsujigaoka, Akishima City, Tokyo (Postal Code: 196-0012)
Phone: 042-543-1523
Fax: 042-542-8002
(These numbers are shared with Akishima Civic Library.)
Website: https://www.akishimaensis.jp/guide/heritage_list.html
- * **Section for Cultural Heritage, Akishima City Board of Education**
Office: Akishimaensis 3-3-15 Tsutsujigaoka, Akishima City, Tokyo (Postal Code: 196-0012)
Phone: 042-519-5717
Fax: 042-519-7456

Visitors' Guide to Local Heritage Exhibition of Akishima City



AKISHIMAENSIS

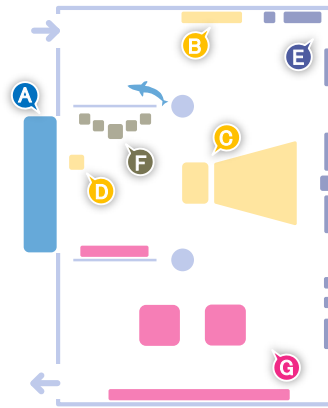


Local Heritage Exhibition Hall

Blessed with abundant water resources and nature, Akishima has nurtured diverse history and culture since ancient times.

This exhibition hall features the local artifacts and works that reflect the history of Akishima, taking an ICT approach as well. Also, curators are here to introduce Akishima from various standpoints.

'Akishimaensis', the nickname for General Center for Education and Welfare, is named after the academic name for the Akishima whale (*Eschrichtius akishimaensis*) as a result of public comment. The special exhibition of the Akishima whale featuring the homecoming fossils, the life-size skeleton replica, and the life-reconstruction sculpture is held in this exhibition hall and this facility.

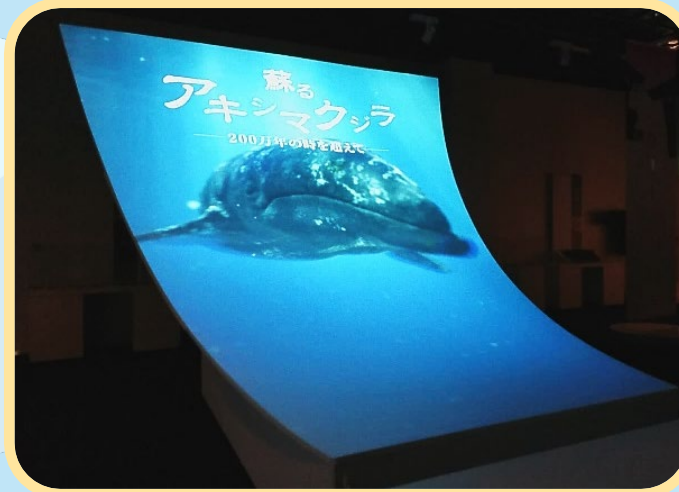


A. Paleoenvironment of Akishima: Local Creatures Dating Back 2 Million Years



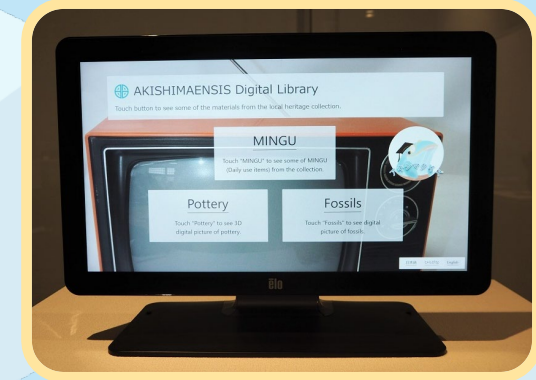
B. Visual Map and Timeline of Akishima

Using the 86-inch touchscreen, the information of the attractive historical sites and nature is accessible, arranged by area and period.



C. Akishima Plate Movies:

"The Reviving Akishima Whale" & "The Story of Life and Pure Water"
Two stories are shown on the giant screen by finding and touching the key item to each story. (The movies are available in Japanese only.)



D. Akishimaensis Digital Library

The information of the local folk tools, excavated pottery and fossils can be accessed here.



E. Let Your Mind Wander through the Changing Times

The local history can be traced through the exhibited materials reflecting the ancestors' life and religion that coexisted with the abundant spring water and the Tama river.



F. Let Your Mind Wander through the Handcrafted Shapes

This exhibition provides a glimpse into ancient handcraft creation, featuring Jomon pottery.



G. Let Your Mind Wander through the Festivals Galore

This exhibition introduces the attractive cultural heritage of the traditional festivals across the city by making regular changes to the display.

This information is as of April 2023.